



STUDENT LIBRARY eCARD

To determine your new eCard number, follow the steps below.

5	5	9	0										
---	---	---	---	--	--	--	--	--	--	--	--	--	--

STEP ONE

Your 14-digit library card number begins with 5590. We've already entered this into the boxes above.

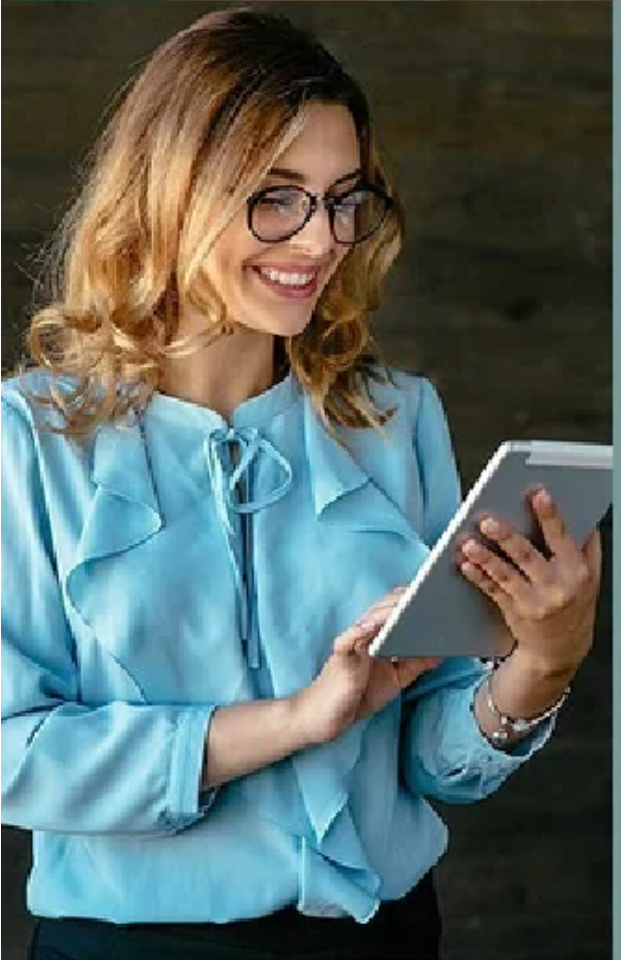
STEP TWO

Enter your Student ID Number in the boxes at the end.

STEP THREE

Fill in any empty boxes between 5590 and your Student ID with the number 0.

**Some resources require you to enter a pin number. Your pin number is the last four digits of your library card.*



TEACHER LIBRARY eCARD

To determine your new eCard number, follow the steps below.

5	5	9	9										
---	---	---	---	--	--	--	--	--	--	--	--	--	--

STEP ONE

Your 14-digit library card number begins with 5599. We've already entered this into the boxes above.

STEP TWO

Enter your Teacher ID Number in the boxes at the end.

STEP THREE

Fill in any empty boxes between 5599 and your Teacher ID with the number 0.

**Some resources require you to enter a pin number. Your pin number is the last four digits of your library card.*